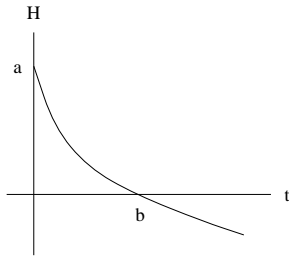


Section 1.1

What is a function?

1. An object is put outside on a cold day at time $t = 0$ where time is measured in minutes. Its temperature, $H = f(t)$, in degrees Celsius, is graphed below.



- a. What does the statement $f(30) = 10$ mean in terms of temperature? Include units for 30 and for 10 in your answer.
 - b. Explain what the vertical intercept, a , and the horizontal intercept, b , represent in terms of temperature of the object and time outside.
-
2. A gas tank 6 meters underground springs a leak. Gas seeps out and contaminates the soil around it. Graph the amount of contamination as a function of the depth (in meters) below ground.